

# Pignoni

## Sprockets

Pignoni per catene semplici a rulli secondo le norme  
DIN 8187/8188 - ISO/R606

### MATERIALE

Tecnopolimero a base poliammidica (PA6) rinforzato con fibra vetro,  
colore: grigio.

### ESECUZIONE

Stampaggio ad iniezione, foro grezzo  
(per dettagli sulla lavorazione vedere Appendice pag 82).



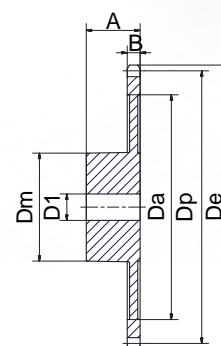
Sprockets for simple chains with rollers according to the standards  
DIN 8187/8188 - ISO/R 606

### MATERIAL

Polyamide-based technopolymer (PA6) reinforced with glass fiber, color:  
grey.

### PRODUCTION

Injection molding, rough bore  
(see Appendix pag 87 for details on the machining).



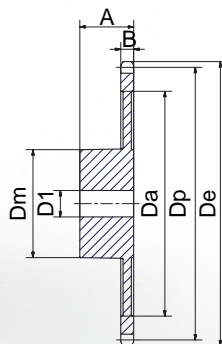
**PASSO 3/8" x 7/32" - 06B-1 / PITCH 3/8" x 7/32"-06B-1**

COD.	Z	De	Dp	Dm	D1	A	B	Da	STOCK
PG38Z012S	12	40,5	36,8	25	8	25	5,3	-	•
PG38Z013S	13	43,5	39,8	28	8	25	5,3	-	•
PG38Z014S	14	46,5	42,8	30	8	25	5,3	-	•
PG38Z015S	15	49,5	45,81	34	8	25	5,3	-	•
PG38Z016S	16	52,5	48,82	35	10	28	5,3	-	-
PG38Z017S	17	55,5	51,83	35	10	28	5,3	-	•
PG38Z018S	18	58,6	54,85	40	10	28	5,3	-	•
PG38Z019S	19	61,6	57,87	44	12	28	5,3	-	•
PG38Z020S	20	64,6	60,89	44	12	28	5,3	-	•
PG38Z021S	21	67,6	63,91	48	12	28	5,3	-	•
PG38Z025S	25	79,7	76	57	12	28	5,3	-	•
PG38Z030S	30	94,8	91,12	40	12	28	5,3	-	•
PG38Z036S	36	113	109,2	70	16	30	5,3	-	•
PG38Z048S	48	150,2	145,6	60	15	30	5,3	-	•



# Pignoni

## Sprockets

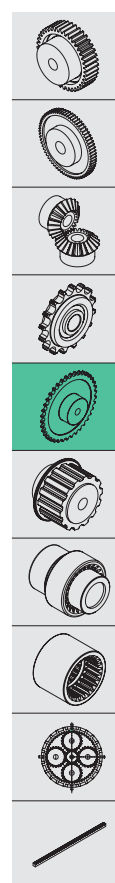


### PASSO 1/2" x 5/16" - 08B-1 / PITCH 1/2" x 5/16" - 08B-1

COD.	Z	De	Dp	Dm	D1	A	B	Da	STOCK
PG12Z009S	9	42	37,13	24	10	28	7,2	-	•
PG12Z010S	10	45,9	41,1	26	10	28	7,2	-	•
PG12Z012S	12	54,6	49,07	32	10	28	7,2	-	•
PG12Z013S	13	57,9	53,06	37	10	28	7,2	-	-
PG12Z014S	14	63,2	57,07	41	10	28	7,2	-	•
PG12Z015S	15	65,9	61,09	45	10	28	7,2	-	•
PG12Z016S	16	69,9	65,1	45	10	28	7,2	-	•
PG12Z017S	17	74	69,11	50	11	28	7,2	-	•
PG12Z018S	18	78	73,13	50	11	28	7,2	-	•
PG12Z019S	19	82	77,16	50	11	28	7,2	-	-
PG12Z020S	20	86	81,19	50	11	28	7,2	-	•
PG12Z021S	21	91,3	85,22	50	11	29	7,2	-	•
PG12Z028S	28	118,3	113,4	60	16	29	7,2	-	•
PG12Z030S	30	126,3	121,5	60	16	30	7,2	-	•
PG12Z036S	36	150,6	145,7	60	16	30	7,2	125	•
PG12Z038S	38	158,6	153,8	60	16	30	7,2	125	•
PG12Z040S	40	166,8	161,87	60	16	30	7,2	135	•

### PASSO 5/8" x 3/8" - 10B-1 / PITCH 5/8" x 3/8" - 10B-1

COD.	Z	De	Dp	Dm	D1	A	B	Da	STOCK
PG58Z012S	12	68,2	61,34	42	12	30	9,2	-	-
PG58Z013S	13	73,2	66,32	47	12	30	9,2	-	-
PG58Z015S	15	83,2	76,36	50	14	30	9,2	-	•
PG58Z017S	17	93,3	86,39	50	14	30	9,2	-	•
PG58Z020S	20	108,4	101,49	60	15	30	9,2	-	-
PG58Z025S	25	133,6	126,66	60	15	30	9,2	90	-
PG58Z030S	30	158,8	151,87	60	15	35	9,2	125	-



# Pignoni doppi/tripli

## Sprockets double/triple

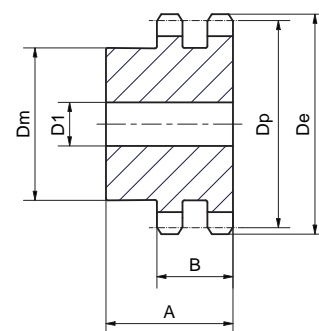
Pignoni per catene doppi e tripli a rulli secondo le norme DIN 8187/8188 - ISO/R606

### MATERIALE

Tecnopolimero a base poliammidica (PA6) rinforzato con fibra vetro, colore: grigio.

### ESECUZIONE

Stampaggio ad iniezione, foro grezzo (per dettagli sulla lavorazione vedere Appendice pag 82).



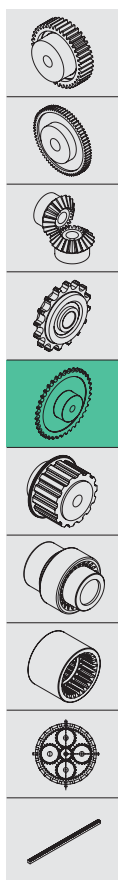
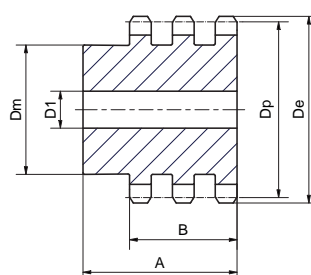
Sprockets for double and triple roller chains according to the standards DIN 8187/8188 - ISO/R 606

### MATERIAL

Polyamide-based technopolymer (PA6) reinforced with glass fiber, color: grey.

### PRODUCTION

Injection molding, rough bore (see Appendix pag 87 for details on the machining).



## DOPPIO / DOUBLE

COD.	PASSO - PITCH	Z	De	Dp	Dm	D1	A	B	CATENA - CHAIN	STOCK
PG38Z021D	3/8	21	67,6	63,91	52	16	40	15,6	06B	•
PG12Z014D	1/2	14	61,9	57,07	42	12	35	20,6	08B	•
PG12Z015D	1/2	15	65,9	61,09	46	12	35	20,6	08B	•

## TRIPLO / TRIPLE

COD.	PASSO - PITCH	Z	De	Dp	Dm	D1	A	B	CATENA - CHAIN	STOCK
PG38Z021TR	3/8	21	67,6	63,91	52	16	40	25,9	06B	•
PG12Z014TR	1/2	14	61,9	57,07	42	12	50	34,15	08B	•
PG12Z015TR	1/2	15	65,9	61,09	46	12	50	34,15	08B	•

